

ALOHA HAMOHO

GUEST ORIENTATION GUIDE*

*Redacted online version; full version available onsite



Quick Reference

WIFI Network	HaMoHo
Password	[onsite]
High Bluffs Gate Code	[onsite]
Check-in	4:00 pm
Check-out	11:00 am
Quiet Hours	9 pm – 8 am
Mauna Kea Residences (24/7)	888-906-2139 maunakearesidences.com/stay/high-bluffs-07
Resort Residential Services (8-6)	808-880-3490
Mauna Kea Security (24/7)	808-880-3385
Emergency	9-1-1
Physical Address	62-3734 Kaunaoa Place High Bluffs at Mauna Kea Resort Kamuela, HI 96743 House phone: 808.315.8003
Website	hamoho.co
Facebook	hapunamodernhouse
Instagram	hapunamodernhouse
Tags	#hamoho @hapunamodernhouse
Reviews:	https://tinyurl.com/hamoho

Contents

Quick Reference	2
Welcome from the Owners	4
General	5
Air-Conditioning	7
Pool and Grounds	11
Great Room/Kitchen.....	12
Using the Great Room TV	13
The Pu’uku Ala Spa at Hapuna Modern House.....	14
Bedrooms and Bathrooms.....	14
Garage	16
Around the Resort	17
Dining Out.....	19
Groceries	22
Shopping.....	23
A Few Local Activities	24
A Few Local Hikes	26
With Aloha!	28

Welcome from the Owners

Aloha,

Welcome to our home, Hapuna Modern House!

To get the most of your stay, we have prepared this guide to help you get oriented to the house, resort and the local area. If you are new to the island, read *Big Island Revealed* on the entrance table or online. It offers great ideas for things to do and see around the island. Nine of the world's 11 climate zones can be found on Hawaii – visit them all!



About the house: Given how many of our trips to the other islands had included some rain, we settled on the Kohala Coast of Hawaii to make our home. This is the driest and sunniest part of the islands, and has the bonus of spectacular beaches and trade winds to keep you cool - although sometimes it might be nice to turn them down! We also like to travel with friends and have always found it difficult to find a comfortable place with amenities like king-sized beds for all, ensuite bathrooms for everyone, a pool, a view, modern décor and a well-equipped kitchen. No one has to flip a coin for “that” room lol. That is how Hapuna Modern House, HaMoHo for short, was born. We designed the mauka (mountain side) garden to feel like a private oasis with the makai (ocean side) oriented up and away from neighbours to ensure privacy.

HaMoHo's modern design took inspiration from Osipoff's Outrigger Canoe Club and Doris Duke's modernist Shangri-La on Oahu (see book on Great Room shelf), merged with the indoor-out openness of the Hapuna Resort. Rather than appropriating Hawaiian culture in resort décor, we've brought elements of our own French-Canadian culture to the island. We've tried to equip the house with everything you might need. We're sure there are things we have missed and, if so, please let your Mauna Kea Residences representative know. The following pages give you some essential information about the house, let you know how things work, where things are stored and give you some starting ideas for your Big Island vacation.

Please sign our guest book as we love to read about your memories you created here. If you enjoyed your stay, please rate us on the site you booked us or on Google or Apple maps. If you had any concerns or ideas for improvement, please let Mauna Kea Residences know.

Enjoy!

Duncan and Rowly

General

Wind – While the Kohala Coast of Hawaii enjoys the most sunshine of anywhere in the state, the trade-off for the clear skies is that the area is subject to sudden blasts of wind. The trade winds come over the saddle of the island and race down toward the coast. High winds are particularly strong in winter.

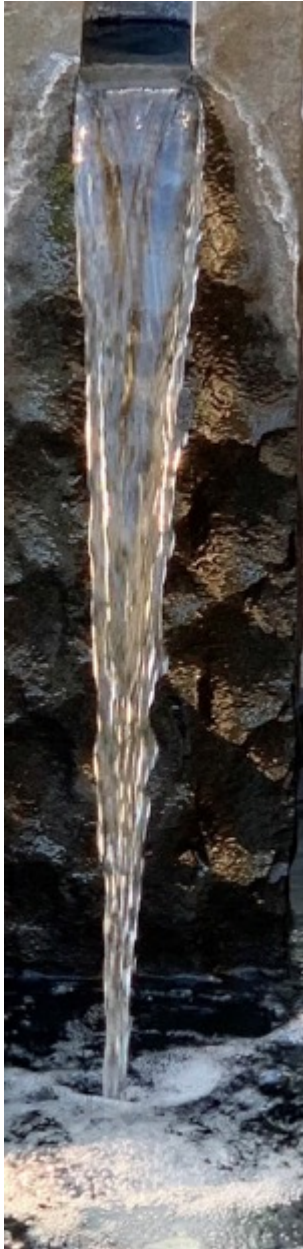


When you are not in the house, please keep all the windows and doors closed on the mauka (mountain side) of the home, as winds can come up suddenly and cause damage.

The makai (ocean side) lanai is well protected from most winds and has been designed to protect you from even the strongest winds. Keeping the screens closed keeps unwanted critters out.

In very high winds, we also recommend keeping most of the pool-side doors closed, as the wind can kick up soil from the hillside and create more dust inside the home. Please ask Mauna Kea Residences to shut off the water features by the front door during sustained high winds. Please also ensure the breezeway gate between the garage and Ohana is securely closed, prevent cushions, umbrellas and toys from flying away and littering the resort.

Wifi and Internet – Network is **HaMoHo**, password is **Puukuala**. We have the highest bandwidth, fastest internet on island. While the wifi has mesh repeaters throughout the home, as you move between zones you may temporarily have weaker signal. If you are using videoconferencing, it's best to stay in one zone to ensure uninterrupted signal. Occasionally the Spectrum network goes down for short periods of time, given we're on an island. We have found when doing video meetings that it's helpful to plug into ethernet but be prepared to tether via the phone network on your mobile device if needed.



If you are having issues with the wifi, reset the modem and router: In the garage, locate the black metal wall cabinet near the solar batteries on the makai (ocean) side. Open the front and turn off the white power bar. Wait 30 seconds. Turn power bar on. It will take about five minutes for everything to boot up. You may need to unplug and replug the Sonos speakers in afterwards if music won't play.

Music/Sonos – Download the free Sonos app to control the sound system and stream your music. Sign in with your own free account. The speakers correspond to room names: Ciel (sky) is the great room, Spa is the spa, Pool is the BBQ area and the bedrooms: Vert (green), Fleur (flower), Mer (sea), Lave (lava), Soleil (sun). When you first start, it may jump a couple songs while it is buffering. Unplug/replug any speakers if needed. If you are using a music service like Spotify, make sure it is removed from your Sonos account here when you check out.

Quiet Hours – Quiet hours are between 9 pm and 8 am.

Fountains – The two south lanai fountains are on timers. To turn off these fountains or change their schedule, please contact Mauna Kea Residences who will be able to make the change remotely. Do not shut off the water or power yourself please or they will get damaged.

Lights and Dimmer Switches – Many lights are on timers and can be turned on and off by tapping the main button, there is a brief delay. Many can be dimmed by touching the small left and right button above the switch. Some are auto timed to come on and off for a welcoming feeling in the evenings. You may override these by simply turning them on or off.

Air Conditioning – The home has central air conditioning, divided into four zones (see floorplan next page). The Spa Room, Vert Suite and Fleur Suite are one zone. The Great Room is its own zone. The Mer Suite, and Lave Suite are a zone. The Soleil Suite (Ohana) is the fourth zone. The larger colour panel in each zone is the master controller for that zone and the smaller ones are secondary controllers. The master controller in each zone needs to be on for the secondary controllers to function, though each room may have its own temperature setting. **When exterior windows or doors are open anywhere in a zone, even in a nearby room, the entire zone will shut off.** There is a delay in air conditioning turning on and off after doors are recently closed. See the next two pages.

Air-Conditioning

General – HaMoHo is divided into four air-conditioning (AC) zones, each zone having its own handler:

- Zone 1 – South Wing which includes the Spa, Vert Room and Fleur Room
- Zone 2 – The Great Room which includes only the Great Room (Ciel) and hallways
- Zone 3 – North Wing which includes the Lave Room and Mer Room
- Zone 4 – Soleil Ohana which includes only the Soleil Room



Turning AC on/off – Ensure all exterior doors within the zone are fully closed.

1. On the main (colour) control panel, tap the top right corner. A pop down will appear. Select “Cool.” **The main colour panel must be on and set to “Cool” for the sub-panels in the other rooms within the same zone to function.** For the Great Room and Soleil colour main panels, you may simply set the desired temperature as there are no other rooms in those zones.
2. For the North and South Wings, on the main (colour) panel in the Spa (South) and Mer (North) rooms, tap the room name in the centre top. A pop down will appear with the name of each room in that zone. Each room can be controlled from the main colour panel AND each sub-panel (white) will control the temperature in each room.
3. Please do not set the cooling temperature below 72 degrees. There is a brief delay up to 5 minutes before the AC comes on. If a door is opened in the zone, the AC will shut down.
4. To turn the AC off, simply raise the temperature above 85 degrees

Protecting the Environment – To ensure that AC is not left on pumping cold air out into the natural air, all exterior doors and sliders have sensors on them. **All AC within a zone will not function if any one exterior door is left open. For example, if the sliding door is not fully closed in the Vert Room, no AC will function in the Fleur, Spa or Vert rooms.** AC will function in the Lave and Mer rooms though as part of that example, assuming their doors are closed. **In order to have AC in any room, make sure all exterior doors and windows are fully closed in that zone and the main panel is set to “Cool.”** Doors do not need to be locked, just ensure that the seam of the sliding doors fully contacts each side in the fully closed position. **Each room may set its own temperature.**

Energy – Electricity on the island is mostly generated by fossil fuels, which are barged to the island by ship. As a result, electricity is very expensive and contributes significantly to global environmental decline. The roof of the home has 130 solar panels, which in most weather conditions provide



sufficient energy to run the home and most systems during the day. The batteries struggle to keep up at night. Please try and do energy intensive things during the day, such as laundry and running dishwashers, and do your best to conserve power, particularly in the evenings. The ceiling fans and almost-always present breeze provide near perfect room temperature throughout the home almost year-round.

Parking – Please ensure all vehicles are parked in the garage or on the motorcourt. Street parking is strictly prohibited on the cul-de-sac. If a vehicle must temporarily stop on the cul-de-sac, ensure it remains on the pavement so as not to damage the irrigation system on the grass.

Critters – It is Hawaii, so there are bugs, birds and a variety of critters. Most of these are completely harmless. Though pest control visits monthly, keep screens closed to keep critters out and prevent birds from flying into the house. In the great room you may prefer to keep the screens to the lanai open under supervision only. Please never leave the property unlocked when not at home.

Health and Emergencies – Call 911 in case of fire, medical or police emergency. The nearest hospital is the Queen’s North Hawaii Community Hospital in Waimea (65-1125 Mamalahoa Hwy Tel: 808-885-4444). Some more serious medical emergencies may require airlift to Oahu.

Child Alarms – The doors to the pools are equipped with child safety alarms. There is a small black switch on the side to turn them on or off. A back up built alarm for all poolside doors can be activate in

the garage. It is located along the house wall in the top right corner of the white panel door. **Guests are fully responsible for monitoring these for their children.**

Safe/Security – The resort is safe. We are a gated community in a guarded community and have never experienced a theft. There is a safe hidden on site – instructions are on site.



Tiki Torches & Flame Pot – If you would like to use these for a special occasion, please contact Mauna Kea Residences. They can blow out in the wind, so present a fire risk and become a climate hazard if not attended. There is a fee for use, given we are required to have personnel confirm they are operated properly.

Garbage and Recycling – Please ensure all garbage is bagged and placed in the motor court containers. Lids must close to prevent high winds from blowing garbage over the resort. They are emptied on Thursdays.

The garbage contractor does not make recycling available on site. You can take excess trash to the transfer station in Waimea (6 am – 6 pm) or Puako (Tues, Fri and Sun 6 am – 6 pm). Glass, plastic, metal and cardboard can be dropped at the transfer station and recycled. Otherwise, all must go in the trash. Hopefully Hawaii will catch up to the mainland when it

comes to offering recycling services to homes.

TVs – Each Samsung TV in each bedroom is fully equipped with all apps and streaming services. To watch live TV, use the Samsung remote to turn the TV on and open the Spectrum app for thousands of channels. More international programming can be found via the free TV Samsung app. Please remember to sign out of any streaming service you sign into. See the TV remote instructions on page 13 of this Guide for operating the Ciel Great Room TV.

Pool and Grounds

Outdoor Showers – There are two outdoor showers, one on the makai (ocean) side of the Ohana and one on the south side of the spa room. Please shower before entering pool or spa, and clean feet/shoes when back from beaches/hikes.

Swimming Pool – The pool is heated by solar-powered electricity that operates during the day. The pool is set to 86 degrees. The pool is cooler in the morning, which is great for swimming lengths, and warmer in the evening, which is great for cocktail hour in the pool to watch the amazing sunsets. If the pool still feels too cold later in the day, let Mauna Kea Residences know. **For safety, please remember to only use acrylic glasses in the pool!** Exterior wood hooks and interior chrome hooks are available to dry wet items; please keep these off furniture.



Spa/Hot Tub – The spa is heated by a powerful gas heater and gets to 102-degrees in 20 minutes. If you are in the spa while it is heating, please keep your feet away from the foot outlets as they get very hot. The controls for the spa are next to the spa in the pool deck. Turn heat on/off by pressing the **SPA** button which will light the red LED. Spa heat shuts off every three hours. To turn jets on or off, use the **JETS** button. Jets turn off every 30 minutes. The **LIGHTS** button will turn on/off the water lights though they are timed to go on at sunset and off shortly after midnight.

BBQ – Main ceramic burner: Press and hold the control knob in for 5-7 seconds, allowing the igniter to heat up. Then rotate the knob to “LITE”. After ignition, set the knob to the desired heat setting. **Rotisserie burner:** push and hold the control knob in for 2 seconds and then turn the knob to the “LITE” position. After ignition CONTINUE HOLDING THE CONTROL KNOB IN for 30 to 60 seconds. During this time the thermocouple will heat up and the safety valve will remain open. If you release the control knob before the thermocouple has heated up, the safety valve will shut off the flow of gas to the rotisserie burner and you will have to re-light the burner. Don’t lean over it.

Service – Matt and Kona Pest Control often come in the morning monthly. The chemicals they use are safe for humans so please give them access to the site. Ethan and his team provide pool service typically on Tuesdays and Fridays each week. Paul and Mow It All Landscaping work typically on Thursdays. If you prefer service schedules to be adjusted, please contact Mauna Kea Residences but please consider that regular service keeps your stay clean and safe.

Great Room/Kitchen

Appliances and Manuals – Appliance manuals are in the makai living room lower drawer. Please do not remove. An online or AI search may be most convenient for all instructions. Beyond the toaster and blender on the counters, additional equipment is located in the drawers. All plates and acrylic wares are located above the blender. Rice cookers of various sizes can be found above the range. In the cupboards under the breakfast bar by the stools you will find a Mixmaster, juicer, food processor, food sealer and food fly screens when those guys occasionally come snooping.



Garburators – Please don't rely on the garburators and **never** put fibrous food scraps down the garburators (corn husks, potato skins, etc.). The countertop garburator switches function on air. If water gets in, they can swamp: unplug the garburator (under the sink), paper towel dry and leave for a few hours. If you find this happens a lot, just put a small, inverted bowl over the switch to keep water out.

Dishwashers – Please only put acrylic glasses and dishes in upper tray and away from back right bottom corner/heater. A magnet is provided to distinguish which dishwasher is being loaded at any time.

Ceiling Fans – Power is controlled by remotes located closest to the power switch for each fan on the wall. Turn labelled switch on. Select speed on remote. Please do not remove remotes from wall.

Floor Lamps – These are touch operated on black dimmer area of light posts.

Games – You'll find chess, checkers, Chinese checkers, Yahtzee, backgammon, Jenga, Tensies, Scrabble, Uno, Exploding Kittens, Telestrations, Monopoly, Apples to Apples, Cranium, Mah-jong and playing cards in the mauka great room drawer. A telescope is provided for star and moon gazing. Please clean and reorganize these for the next guest.

TV – Great Room TV is located behind the sliding wood panel. Remotes are in with TV if not on table. The blue “Storm” hanging next to the TV was created in 2018 by our neighbour Marlene Louchheim. Her book rests on the shelves if you are interested more in her art. See TV remote use:

Using the Great Room TV

To watch TV:

- Gently slide the wood panel to the left.
- Use the Xumo or LG remote to turn on the TV
- Use the LG remote to select apps for streaming or to select the Xumo/HDMI 1 for live TV
- Use Xumo remote for live Spectrum TV
- Remember to sign out of any apps to which you sign in



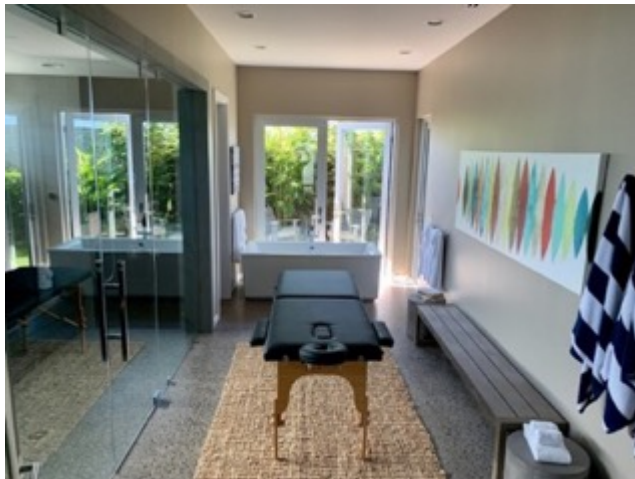
To play games:

- **Please do not touch any wires or equipment behind Ciel Great Room TV**
- A surplus HDMI cable is available as ‘HDMI 3’ behind Ciel TV for connecting to your external device if needed
- A surplus HDMI cable is located behind each bedroom TV to connect devices

Thank you!

The Pu'uku Ala Spa at Hapuna Modern House

Steam Room – In the 10-person steam room, please note that the steam vent gets very hot and can cause burns or scalding if you get too close. The control is a bit finicky so keep lightly touching/rubbing the on and intensity buttons to operate. Users use the steam at their own risk. Please read the caution label carefully as serious injury or even death can occur. A drop or two of an essential oil of your choice in the small indentation of the outlet prior to turning on the steam offers deeper relaxation.



Important: Never operate spa with glass door left open. When finished, turn on the fan from switch under AC control. When using steam room please close grey double doors to prevent steam from reaching hallway fire heat detector. Not following these steps can cause a fire alarm with fines from the fire department.

Plunge Tub –The two-person tub provides a calm, soak or can provide a cooling plunge in between steams to invigorate circulation. Try any Spotify spa playlists to create an authentic retreat.

Massage – The Spa Room is equipped with a massage table with physio hook in the ceiling. If you would like to arrange for a massage therapist to visit the house, please contact the Kona Concierge (listed at the front of this book).

Towel warmer – Wet or dry towels may be placed in the small towel warmer for a professional massage experience.

Book exchange – Feel free to take a good book and leave a good book from the bench library

Zen Garden – You may wish to relax by doing yoga, lounging on a mat with a book, or meditating outside the spa for an escape from your entourage. Take a book, leave a book library on the bench.

Aloe Garden – Feel free to cut aloe to treat sunburn from the BBQ planters. Cut off the tough skin and rub the juicy pulp on the damaged skin for natural soothing cool relief.

Windows & doors – Please ensure these are always closed and locked when not using the spa. Wind gusts appear suddenly and will shatter the glass, and the air-conditioning will not function.

Bedrooms and Bathrooms

Ceiling Fans –Power is turned on and off by switch on the wall, immediately next to the remote to control the speed.

Beach Bags – Color coordinated beach bags, pareos and cabana towels are provided for your use while visiting. Pareos can be worn by all genders and may also be used as a beach towel. Please clean and leave behind for the next guest to enjoy.



Pillows – There are a variety throughout the house from soft to firm, natural fibers, foam and feather down. Mix and match as you like. Also, while all beds are deluxe posturepedic foam, Lave is extra firm, Fleur and Mer are standard firmness and Soleil and Vert are plush mattresses to accommodate various preferences.

Toilets/Bidets – Only toilet paper in toilets please; all other waste must go in garbage. On the bidet remote, the icon in the top row with a bum and a splash is the bum wash for your daily business, the icon in the second row with a dotted line is an enema. You might not wish to get them confused. :D There is an icon for feminine cleaning as well. If using the dryer fan or vent functions, please ensure these are turned off when you depart the washroom.

Dispensers in Shower – Green is our Pu’uku Ala magic herb shower gel. You won’t be able to stop smelling yourself lol. One pump or two goes a long way and can be used as a bubble bath in the spa tub **never in the pool jacuzzi please**. The blue/clear liquid dispenser is salon shampoo and white is salon conditioner.

Showers: Hot Water – Press button on dial, turn counter-clockwise for hot water. Hot water takes a moment to heat up. The volcanic silica on island makes our water very hard. Please use squeegees quickly after each shower to prevent permanent staining of the glass.

Ohana – The key when you arrive is described in the onsite manual.

Garage

Help yourself to any of the outdoor games or beach accessories in unlocked cabinets on the mauka side in the garage. These include: boogie boards, Tommy Bahama Beach chairs and umbrellas, badminton and volleyball net and equipment, Connect 4, Cornhole, croquet, Kub, water weights, snorkel sets, water cannons, floaties, cooler and sun hats. Please store light items like floaties in BBQ area or garage when unattended or they will end up in the golf course! Lanai umbrellas are provided for sun protection on deck. Never place umbrellas near or in the pool to prevent rust and tile damage, and close when not monitored. For holiday time there is a Christmas tree on top of the garage locker if desired.

You are welcome to park inside the garage in the two available stalls. The garage door control is just inside the entry door off the lanai. Up to three more cars may also park in the motorcourt. No street parking please.

Security cameras are located on each of the northwest overhang of the Ohana and the southeast makai corner. They provide a 180-degree view out to the driveway and motorcourt, and out to the gate entrance for security only. They cannot view any activity on site aside from the driveway and motorcourt. They cannot “see” the outdoor shower or into the Ohana bathroom. Feel free to inspect for yourself as we are committed to always ensure respect for guests’ security and privacy.



Around the Resort

The **Westin Hapuna Beach Resort** and the **Mauna Kea Resort** both offer a wide array of amenities. If you have arranged for resort access, please refer to the materials provided for the latest information. Hapuna is a 10-15 min walk and Mauna Kea another 10-15 mins from there. If you wish to drive, note the access to Mauna Kea is the first left turn off the highway heading north.



Luau! – For a fun, traditional night out, head to the Mauna Kea Beach Resort Luau Tuesdays and Fridays at 515pm – 745pm. Reservations: <https://www.maunakearesort.com/dine/signature/mauna-kea-luau>

Resort Access – This \$450/day value is included in your rental! Treat both luxury resort hotels as if you were a guest there! You will receive resort access cards and rental car hangers. These provide you with access to all resort amenities, including beach chairs and towel services, as well as pool and fitness center access at both resorts. You are treated exactly as if you were a guest staying in the hotels.

Resort Parking – If you have arranged for resort access, you can use your access card to park in both the guest parking lots at either resort. If you do not have an access card, but you have been given a gate pass to hang from your rear view mirror, you can park in the homeowner parking at the Hapuna Resort. This parking is located directly across from the guest parkade. Parking at the Mauna Kea is more challenging unless you have a resort access card. If you don't have a card, ask at the main gate for a pass to the public beach parking. There are a limited number of spaces, so this may not always work. You can also valet park at both hotels for dining and shopping.

Walking - You can walk between the Hapuna and Mauna Kea resorts either along the water (Ala Kahakai Trail) or follow the road north from the Hapuna and use the golf cart path once you reach the wooden gates of the Kauna'oa neighbourhood. There are a few signs along the way. You can walk around the resort, below or above the highway, alongside the road on the grassy area. However, walking on golf cart paths is not permitted during daylight other than where indicated. It is exactly 1 km (2/3 of a mile) to the Hapuna Resort and exactly another 1 km (2/3 of a mile) from the Hapuna Resort to the Mauna Kea Resort or a 10-15 min walk along the roads for each leg.

Hapuna Beach and Mauna Kea Beach – Both beaches are public. However, with resort access, you may use the beach chairs and towel services in the special area set aside for guests. Alternatively, please use the cabana beach towels provided that match your room and help yourself to beach chairs from the garage.



Dining Out

FOR A NICE EVENING OUT (RESERVATIONS RECOMMENDED)

Meridia at the Westin Hapuna Beach Resort – The main restaurant at the Westin Hapuna is a convenient spot for dinner though the food quality is variable.

www.meridiarestaurant.com Tel: 808-880-1111

Merriman's in Waimea – If you are up for a drive to Waimea, this restaurant uses locally sourced food and is a local favourite for lunch or dinner www.merrimanshawaii.com 65-1227 Opelo Road Tel: 808-885-6822 *We personally feel this is the best food on island!

Canoe House at the Auberge, Mauna Lani – A beautiful setting, their bread is a favourite of many of our friends. A lovely spot for dinner. www.aubergeresorts.com/maunalani/dine/canoe-house

Manta at the Mauna Kea Resort - A beautiful setting for dinner and an opportunity to see the mantas. The food here, also variable, tends to be quite rich, so you may want to skip lunch!

www.maunakeabeachhotel.com Tel: 808-882-5707

Pueo's Osteria in Waikoloa Village – A nice casual Italian restaurant for dinner, if you are open to a drive. Note this is in Waikoloa Village (up the hill) NOT Waikoloa Resort.

www.pueososteria.com Tel: 808-339-7566



MORE CASUAL ...

Big Island Brewhaus in Waimea is a great spot for lunch or dinner and offers a large selection of different beers. Lunch or dinner) www.bigislandbrewhaus.com 64-1066 Mamalahoa Hwy, Waimea
Tel: 808-887-1717

Copper Bar at the Mauna Kea – Lovely space and ambience. Nice Variety of menu options, or a good place for just a cocktail (reservations recommended for dinner) Tel: 808-882-5707



Hau Tree at the Mauna Kea Resort – Right on the beach! Also a great spot for lunch or drinks.

Lava Lava Beach Club at Waikoloa Beach offers a fun funky vibe for lunch or dinner. www.lavalavabeachclub.com 69-1081 Ku’uali’i Place, Waikoloa Resort Tel: 808-769-5282

Naupaka at the Hapuna Beach Resort – Nice lunch spot, adjacent the main pool.

Number 3 at the Mauna Kea Golf Course – A nice casual lunch spot.

Smash Daddy’s Burgers up the hill in Waikoloa Village offers a local super casual burger. <https://www.smashdaddys808.com/locations/waikoloa-village/> 68-1820 Waikoloa Rd #505, Waikoloa, HI 96738 Tel: 808-796-3002

The Seafood Bar and Grill in Kawaihae is a fun spot with a nice atmosphere, suited to either lunch or dinner. www.seafoodbarandgrill.com 61-3642 Kawaihae Road Tel: 808-880-9393

Tommy Bahama’s – A nice casual spot for lunch or dinner in the Shops at Mauna Lani. Tel: 808-881-8686

IN KONA

On the Rocks – A fun waterfront place to grab a bite or a drink in Kona. 75-5824 Kahakai Road, Kailua-Kona www.huggosontherocks.com Tel: 808-329-8711

Huggo's – A Kona tradition for dinner, for island-style dining at the water's edge. www.huggos.com 75-5828 Kahakai Road, Kailua-Kona Tel: 808-329-1493

Kai Eats + Drinks – Pizza, tacos, burgers in a cool hip beach vibe right on the water in downtown Kona www.kaieatsanddrinks.com 75-5776 Ali'i Drive, Kailua-Kona Tel: 808-900-3287



IN HILO

Café Pesto – If you are passing through Hilo, this is a favourite for a lunch break or to pick up some pizza for the ride home. www.cafepesto.com 308 Kamehameha Ave #101 Tel: 808-969-6640

Groceries

Costco – Costco is conveniently just a short distance south of the airport, usually our first stop after landing. 73-5600 Maiau Street

Foodland Farms, Mauna Lani – We usually stop here after Costco on our way up to the resort. In addition to groceries, they also have great poke bowls to go. Take the Mauna Lani Resort exit and the Shops at Mauna Lani is on the main roundabout. 1330 Mauna Lani Drive

Island Gourmet Market, Waikoloa Resort – If you are arriving late, this is a good option as they are open until 10 p.m., 10:30 p.m. on weekends. They are also open on holidays when everything else is closed. It is like an ABC store on steroids. Turn left off the highway at the first set of lights for Waikoloa Resort as you are heading north. The market is in the Queen’s Market which will be on your left as you head toward the water. 69-201 Waikoloa Beach Drive

KTA Super Store, Waikoloa Village – A bit of a drive up the hill, but a well-stocked grocery store. 68-3916 Paniolo Avenue, Waikoloa Village



Foodland Farms, Waimea – Located in the Parker Ranch Center in Waimea, this is a larger and better stocked version of the Mauna Lani Foodland. 67-1185 Mamalahoa Hwy

KTA Super Store, Waimea – Across the street from the Foodland above.

Kamuela Liquor, Waimea – If there is something special you are looking for that you can’t find in Costco or one of the grocery stores, this is usually a good bet. 64-1010 Mamaloahoa Hwy

Da Fish Shack – A great source for fresh fish and poke, only a few minutes north of the house in Kawaihae. 613659 Kawaihae-Mahukona Road

Waimea Farmer’s Markets – There are three farmers markets in Waimea on Saturday mornings and one on Wednesday. Good source for local produce, foods and artisan wares. Best to arrive early for a good selection. www.lovebigisland.com/waimea-farmers-market

Shopping

There are lots of wonderful places to go shopping on the island, from local artisan markets to resort boutiques.

For local artisan wares, the markets in Waimea are a good bet (see next page).

We would also encourage you to explore the smaller towns, such as Old Kohala, Hawi and Honoka'a, where you will find charming local shops and galleries.



If you are looking for some more luxurious finds at the mall, Queens Market and Kings Shops at the Waikoloa Resort have a good selection of stores. In the Mauna Kea Resort, there are shops in both hotels, at both golf courses and at the tennis club at the Mauna Kea.

While looking for turtles along the lava-rocky sands in nearby charming Puako, stop in at the General Store for an eclectic mix of convenience groceries and sporting equipment.

A Few Local Activities

SEE “THE BIG ISLAND REVEALED” BOOK ON GREAT ROOM SHELVES FOR GREAT IDEAS FOR SNORKELLING, HIKES, SCUBA, TOURS AND EVENTS. A few of our favourite closer options below:

Mauna Kea Art Tour | 10AM - Noon – Every Saturday morning, meet the volunteer art docent in the lobby of the Mauna Kea at 10AM. You will be treated to a free tour of the extensive collection of international and local masterpieces originally curated by Rockefeller himself. Finish off with a lunch in the Copper Bar or at Hau Tree on the beach.

See some favourite local hikes on the following pages...

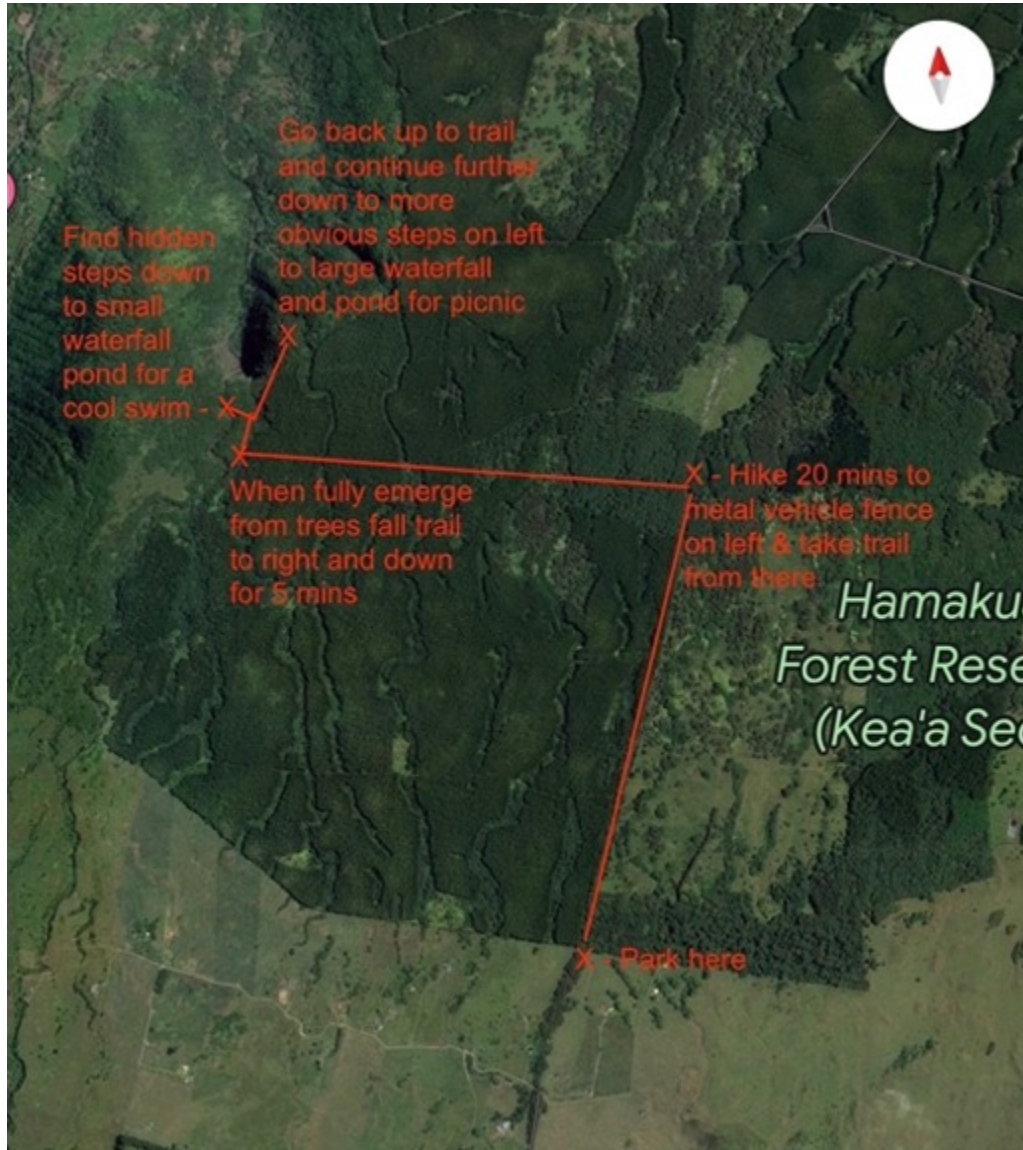


Queen's Bath Fish Pond | 15 min drive, 20 min walk each way – Bathe like ancient Hawai'ian royalty in this secret archeological ancient freshwater pond. Dip your toes in for the best pedicure you've had by the hungry fish who harmlessly nibble away callouses from hiking. Drive to the Mauna Lani Auberge Resort, park and walk for 20 minutes along the redlined path on the aerial view to the left. Grab an excellent brunch at the Auberge's HāLani before or after.

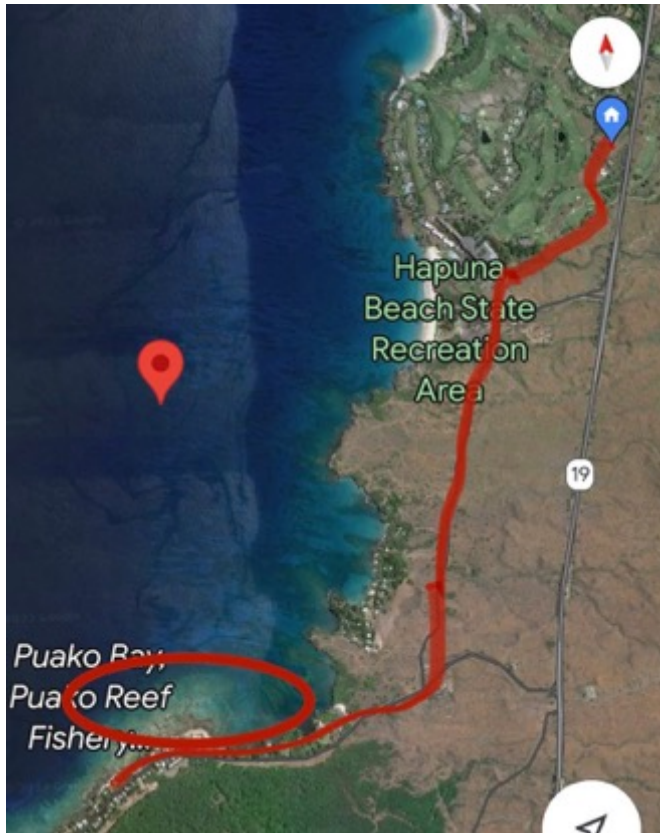
Waimea Saturday Morning Farmer's Market | 25 min drive each way – Step back in time to a traditional small town farmer's market with fascinating artistic finds, fresh locally grown produce and locally made goods. The Parker Ranch one is good for produce, and for a special treat head to the Paniolo Stables for fresh produce and local artisans - go early for a good selection!



A Few Local Hikes



Mud Lane Hike to Waterfalls | 40 min drive + 45 min walk each way – For those seeking something off the beaten track, pick a dry morning in Waimea, grab a picnic at Kamuela Kitchen and drive to Mud Lane just north of the town. Drive down the narrow road until it starts to look hard to continue. Pull over at the gates on either side of the road, park and walk down about 15 minutes until you see a couple of signs on your left warning about a tree disease over a large steel gate. Turn into the sometimes-muddy path there and walk through the amazing tall trees for about 20 minutes until you come to a clearing. Follow the path down to the right for 10 minutes and then take the steppingstones down on your left, following the sound of rushing water, to see the amazing waterfall. Bonus points on your way back out if you can find the hidden path to the swimming pond at the top of the waterfall, where you can swim under a smaller waterfall.



Puako Snorkel Walk | 90 min walk each way – Pack up snorkel gear from the garage locker after sanitizing it for 20 minutes in the laundry room sink with a capful of bleach. Grab sunscreen, a picnic lunch and a couple of the Tommy Bahama chairs and umbrellas from the garage. Walk down our street turning right onto the grass side of Kauna’oa Drive, heading down towards the Hapuna Resort. Pass the Hapuna Golf Clubhouse on your right and take the first left. Pass the Hapuna parking lot down the driveway to a steel gate. Walk around the gate and follow Old Puako Road for 20-30 minutes. Turn right at the stop sign and follow the road into Puako. Take any of the marked Public Beach Access footpaths to explore the shallow beach snorkelling for colourful fish and turtles, but please always keep a respectful distance from them.



Pololu Valley Lookout Hike | 45 min drive + 45 min hike each way

– Follow the highway north to Hawi. Pull over at the coffeeshop and have them assemble a picnic. Continue driving on the highway east until you get to the end of the road. Pull over and park. For the less active, you may find a nice spot to picnic at the top near the trailhead down. For the more active, hike 20 minutes down for a picnic on the beach. For the adventurous, go across the beach, and stay on the trails in the forest parallel to the ocean. We must avoid trespassing onto the sacred burial mounds nearby. The trail will slope up away from the beach and you can make the additional 20-minute hike up the other side of the valley. Keep going until you come to a perfect bench with one of the most gorgeous views at which you will ever picnic.

With Aloha!

Please don't hesitate to reach out to the team at Mauna Kea Residences (888-906-2139 · maunakearesidences.com) for anything you need. Please alert them of any issues you notice like burned-out landscape lighting or broken irrigation heads. Please leave us reviews on booking sites or at: <https://tinyurl.com/hamoho> We hope your expectations have been surpassed, that you have a comfortable and soul-replenishing stay in this little private piece of paradise, and that you return to make many happy memories that bring you back to us again.

Mahalo (thank you),
Duncan & Rowly